

STAFFORDSHIRE ST







**STAFFORDSHIRE STREET** SE15  
LONDON BOROUGH OF SOUTHWARK









## ABOUT

Staffordshire St is set in the heart of Peckham and is ideal for those looking for a unique and flexible space for events and film or photo shoots. The Main Gallery boasts pristine white walls, wooden floor boards, a 3.4m high ceiling and 1500 sq ft of floor space. Built in 1833 as a Methodist Hall, the venue still retains some of its original features of large paned windows on the facade of the building and the six pillars that frame the space.

Staffordshire Street CIC is a new independent company supporting arts and cultural events in South London, committed to giving opportunities to people to develop their work and build educational and collaborative exchanges. As a community interest company, all income raised through venue hire is reinvested into supporting artists and events.



## VENUE HIRE

Staffordshire St comprises 1500sqft/130m<sup>2</sup> of gallery space and is available to hire to set up for a range of events and occasions including :

Screenings

Product and book launches Presentations

Canapé receptions

Private Dining / Supperclubs

Performances

Conferences / Press Events

Wedding ceremonies and receptions

Presentations

Workshops

Training and Away-days Meetings

Film and Photography Shoots

Virtual/Hybrid Studio

Cooking Demonstrations/ Masterclasses

The adjacent Cafe can provide catering for your event and it may be possible to hire their professional kitchen as part of your event.







## GALLERY

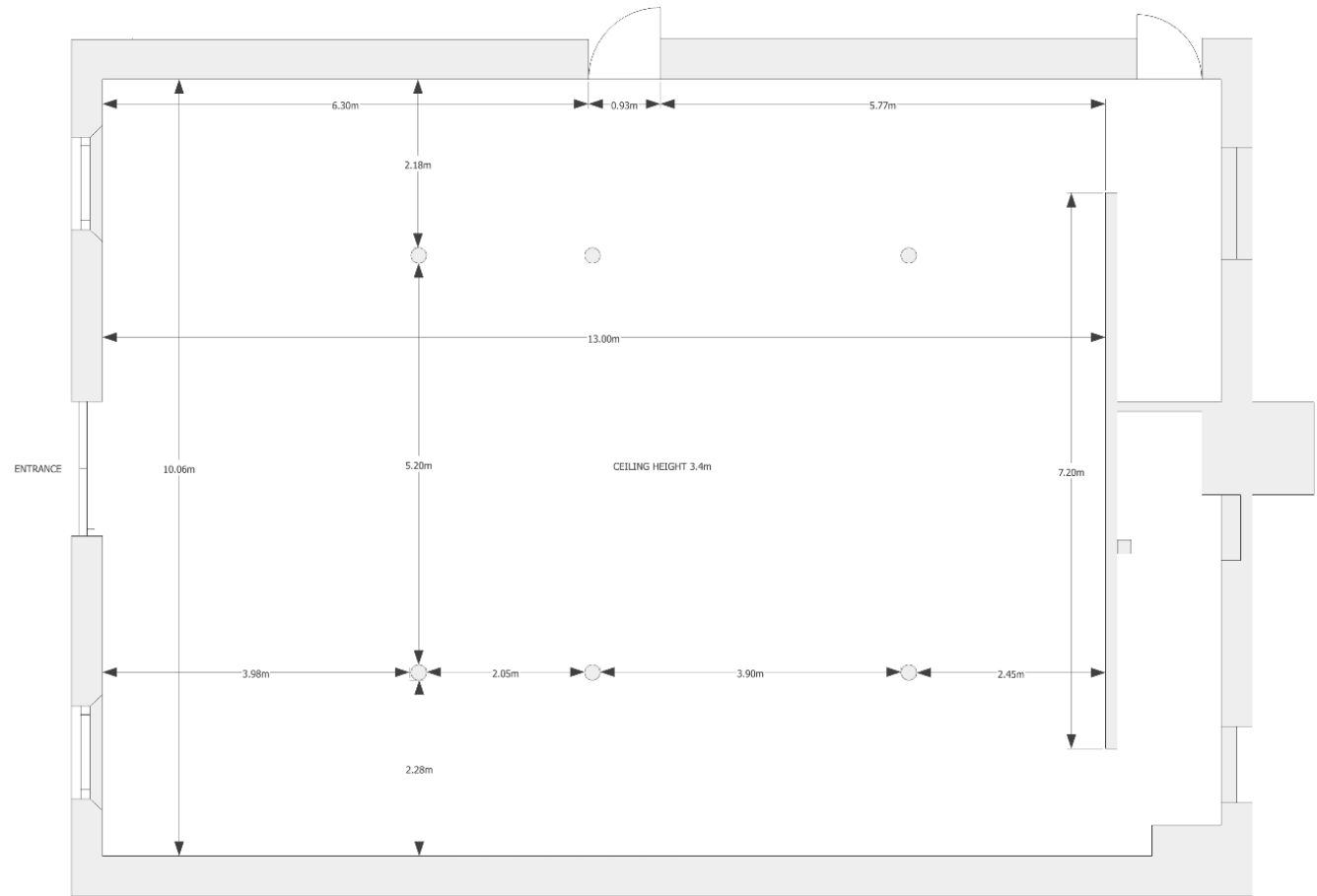
The Gallery measures just over 1500sqft /130 m2 in floor space.

## CAPACITY

Maximum Capacity 120

## DIMENSIONS

The Gallery space is 13m x 10m







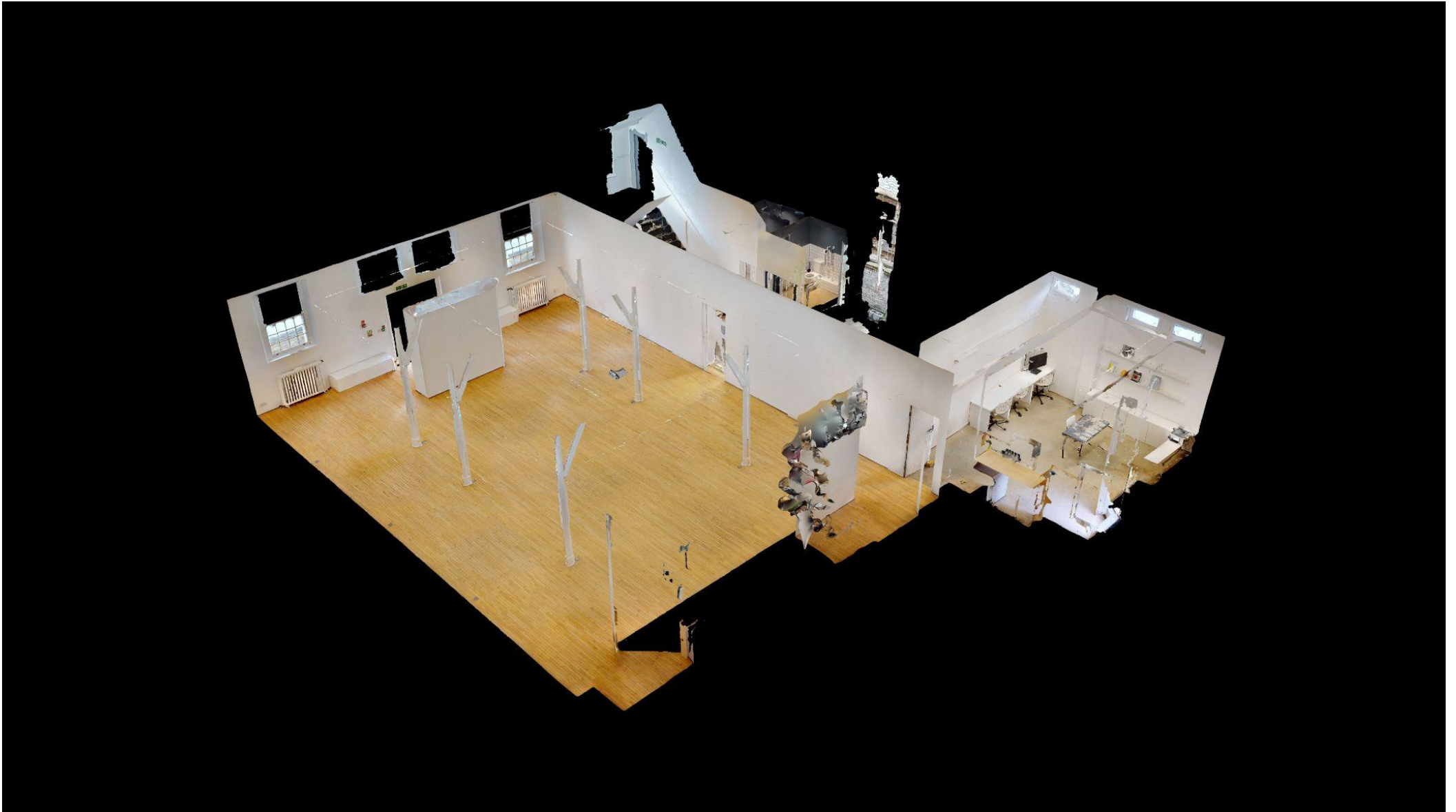






## FLOORPLAN GALLERY AND FACILITIES

A 3D Model is viewable online here: <https://my.matterport.com/show/?m=jTTwAJEcX93>



# FACILITIES

If you need any further furniture that is not on this list, do let us know so that we can facilitate the hire of these items. We can also arrange door security and photographers at your cost.

## Gallery Equipment

2x Tall Stepladders  
2x Gallery Benches  
8x SLV ES111 Spotlights (spare bulbs available)

## Gallery Furniture

2 x Fold up Table 1m by 2m  
60x Black Folding Chairs (Ikea Gunde Folding Chair Black)

## AV Gallery Equipment (Technical supervision required to use)

1x Optoma ZH403 HD Projector  
3x Projector Mounts  
2x LG 55" 55UH7650 4k LED TVs  
1x TV floor mount/stand on wheels  
2x Digital Media Players  
2x DHCP Splitter  
1x Pair of Alesis Studio monitors  
3x Planar 46" HD LCD monitors/displays  
1x Behringer SuperXpro CX2310 Crossover

## Computers and IT

1x Apple AirPort Extreme A1521

## Sound System (Technical supervision required to use)

800KW PA System Elokance ELO 800  
1 x Subwoofer Elo-Sub15A-C  
2 x PA Speakers  
2 x XLR to jack  
2 x Speakon Cable  
4 x XLR to XLR Cable  
1 x Yamaha Mixer MG82cx







# FURTHER INFORMATION

## AVAILABILITY

Staffordshire Street Studios is an artist studio building. Separate access is provided to the gallery space however respect and awareness of other uses must be maintained. STS runs an arts and cultural programme. During exhibitions and events the gallery is unavailable for hire, please inquire for availability.

The maximum capacity of an event at Staffordshire Street Studios is 120.

## ACCESS

Staffordshire Street Studios has a step-free gallery space and disabled access toilets.

## NOISE

Staffordshire Street Studios has a speaker system for use in the gallery. As the gallery is situated in a residential area noise levels will be monitored and you will be asked to reduce your music levels if they breach our permitted limits. Your guests must leave by 11pm and no music may be played during clear-up thereafter. Please see our crowd dispersal policy for more details.

## DELIVERIES

Please contact Staffordshire Street Studios to arrange delivery times. Subject to availability storage on-site 24 hours before or after your event, after that storage will be charged at £100+vat per day.

## SMOKING

Smoking is not allowed anywhere in Staffordshire Street Studios. Smoking is permitted in the courtyard until 11pm and smoking outside the front is permitted until 9pm, however we are situated on a residential street and a doorman is required for certain events to control noise and crowd dispersal.

## CANDLES

Candles are not permitted in Staffordshire Street Studios, except with express permission granted in advance.

## DECORATION

No decorating is allowed without prior consent including attaching things to the walls by any means.

## INSURANCE

Businesses hiring any space at Staffordshire Street Studios will need to provide us with evidence of public liability insurance with a cover of not less than £2,000,000.

## SUPPLIERS

We have a list of approved catering suppliers which we can recommend or you can use your referred catering. Suppliers are responsible for the cleaning of event spaces used.





## CONTACT

Staffordshire St

49 Staffordshire Street

London

SE15 5TJ

<https://www.staffordshirest.com>

[info@staffordshirestreetst.com](mailto:info@staffordshirestreetst.com)

instagram : @staffordshirest

Tube: Elephant & Castle

Overground: Queens Road Peckham or Peckham Rye

Parking: Metered street parking

